



TUVALI

ENGINEERING LTD



COMPANY PROFILE

Contracting Engineers, Project Managers & Business Consultants



TABLE OF CONTENTS

Introduction	04
About Company	05
Our Division	06
Our Services	07
Our Products	21
Our Team	22
Company Certificates	23
Find Us	26

WELCOME to TUVALL

TUVALI Engineering Limited is a Zambian-owned, multi-disciplinary engineering company established in 2022. Dedicated to being the preferred service provider for owners, developers, and customers, TUVALI prioritizes utilizing a local workforce to support the community. Originally focused on repairs and maintenance, the company has expanded into a “multi-faceted” engineering organization, now offering a broad range of services, including:

Building Construction
Road Construction
Powerline Construction
Project Management
Project Design
Steel Structures
Engineering Supplies

TUVALI Engineering Limited remains committed to delivering quality engineering solutions while fostering growth within the communities it serves.



SUCCESS IT'S ALL ABOUT TIME AND COMMITMENT.

From beginning to end, you can rely on us for our level of trust and reliability, with operations through out Zambia.

For specialized Engineering solutions for every kind of product or demand, our customers can rely on TUVALI. Additionally, we think that keeping ties with our clients comes from teaching our employees to help our customers completely and devotedly at every stage of the project.

ABOUT our company

We have a heritage of hard work, providing quality and above per products and services. In order to reduce globalization, We have embraced the idea of being a multi sectorial service provider as well as offer the best product which will innovatively design and produce.

We Believe in and Promote Quality Delivery



Vision

As a leading global provider of supply chain and Engineering solutions, we strive to be recognized as a professional and innovative company.



Our Mission

The development and implementation of strategies and programs that will ensure:

- Professionalism in operations
- Maximum utilization of competitive advantages
- Successful engineering, construction and supply services



Our Values

- Safety and Accountability

The safety of our employees and clients is our number one priority as a responsible and accountable company.

- Integrity

Trust is what we build our reputation on. Continually promoting honesty, integrity, and reliability, we adhere to the highest moral and ethical standards.

- Innovation

Our company challenges the standard ways of doing things in the engineering industry and develops new and innovative ways to meet the needs of our clients.

OUR Divisions



Over the years TUVALI has been operating as an incorporated company for a number of projects. It started out as a freelance team and later on decided to upgrade into an incorporated company. TUVALI is divided in three sections namely Engineering, Finance and Systems.



OUR ENVIRONMENTAL STATEMENT

TUVALI is committed to minimizing the impact on the environment as a result of our working activities. We will strive for continual improvement in this area so that we minimize our impact on the community and other groups who may be affected by our work. As such TUVALI Engineering will carry out all activities in a manner that provides consideration of the environment and the health and wellbeing of those involved. We will cooperate with relevant authorities and clients to meet statutory and contractual requirements. At TUVALI every individual is responsible for providing a healthy, safe and environmentally clean work place.

WHY CHOOSE US?

We are a committed team with

QUALITY

We are committed to providing the highest quality service and products for our clients as well as to add value to their invest. We end to end engineering processes and systems provide the means by which we can deliver our services and commitments.

VALUE

We treat our client's business as our own by providing value for money and obtaining the most competitive pricing.

INTERGRITY

We will be honest and open in all our dealings to ensure we obtain the trust of our clients.

TEAMWORK

We actively promote teamwork and expect each person to take responsibility for their work and treat others with respect.

INNOVATION

We aspire to provide our clients with innovative and effective solutions in our production and provision of service.

PUNCTUALITY: We value punctuality in both our delivery of Products and services as well as how we handle our client's needs.

HEALTHY & SAFETY STATEMENT
The most crucial business factor for this organization is the safety and well-being of its workers. No employee will be forced to perform a task that they deem dangerous. The business will uphold occupational safety and health standards that are on par with or higher than the best practices in the sector, and it will adhere to all applicable OSHA workplace safety and health rules.

OUR SERVICES

Overview

TUVALI has developed experience in a variety of economic fields. Together with its partners, this has aided the business in achieving its goals by enabling it to expand quickly in the fields of construction, energy, supply, software development, financial ventures, agriculture, and mining.



BUILDING
CONSTRUCTION



ROADS & EARTHWORKS
CONSTRUCTION



SOLAR POWER
CONSTRUCTION & INSTALLATION



POWER LINE & SUBSTATION
CONSTRUCTION

OUR SERVICES

Overview Continued



PROJECT
DESIGN



STEEL STRUCTURES
BUILDING



PROJECT & CONSTRUCTION
MANAGEMENT



PROCUREMENT & SUPPLY
MANAGEMENT

BUILDING CONSTRUCTION



TUVALI is a leading building firm, providing full construction management as well as facilities-related services from sustainable building to the latest in construction technology for clients across various markets. We offer efficient building maintenance, systems service and general construction work. We guarantee our work and provide instant response and clean, quiet, considerate execution of all your facility needs.

Construction of Buildings

Clearance of site and setting out infrastructure.
Excavation of pillars is set to form a firm foundation.
Blinding of foundation prior to placement of reinforcement and subsequent concrete casting.

Construction of schools

TUVALI'S Services works hands-on, managing schedule, cost and quality—all with a vigilant focus on safety. We bring a resume of proven experience in public school construction to your project/program.



You will be carefully guided through each stage of the building process by our team of committed and highly skilled experts. We feel that maintaining open and honest dialogue throughout every stage of the building process is the best way to ensure a rewarding and enjoyable building experience. This mindset is used from the moment you make your first inquiry until long after your building project is finished and handed over, giving you complete peace of mind..

Offering our clients a flexible and detailed service, we are able to manage all aspects of the building process to the highest possible standards. This includes working with local councils, initial concept and design through to approvals and construction of your project. Our team of professionals will work closely with you each step of the way, ensuring the finished project is exactly as you intended.

Committed to providing a truly unique and rewarding building experience for our clients, we adopt the latest building technologies and creative design principles to transform your ideas into reality.

Our dedicated trades are of superior quality and fine workmanship and like us, pride themselves on delivering environments that are truly inspiring - Beautiful homes & Offices of the highest standards, tailored to your specific requirements.



Renovation of Graduate School Business at University of Zambia



Renovation of Kwacha Common Room at University of Zambia under UNESCO (Exterior)



Renovation of Kwacha Common Room at University of Zambia under UNESCO (Interior)



Renovation of 10 Housing Units in Nyimba District



**Construction of a service Station for Rubis Kafue Road
(Sub – Contract)**



Construction of Warehouse in Fimpulu Mansa District



EARTHWORKS CONSTRUCTION



ROAD CONSTRUCTION

We offer comprehensive road construction and maintenance services spanning the spectrum from sub-grade construction to aggregate-base construction. Our personnel are experienced in the many facets of road construction. Our road building services include:

- **Excavation**
- **Culvert Installation**
- **Demolition**
- **Clearing and Grubbing**
- **Concrete Sidewalk**
- **Chip Sealing.**
- **Crack Sealing.**
- **Gravel Base Installation.**
- **Erosion and Sediment Control.**
- **Concrete Paving.**
- **Concrete Curb and Gutter.**

We have vast experience in all types of paving work, specializing in: Highways, Local Roads, Private Drives, Subdivisions, Commercial Parking Lots and Industrial Drive and all types of drainages.

One of the company's key business areas is the construction of roads and drainages. years of expertise in road construction and upkeep, from basic graveling on country roads to class A roads with heavy traffic. The business has successfully designed and built a variety of pavement types and wearing courses, and it is familiar with the many complexities involved in highway construction.

As a locally owned and operated business, it has also been our goal to effectively contribute to the infrastructure development in our country, whilst continually striving to improve our services and exceed the expectations of our clients. With many years of experience, a wide range of capabilities and a vast portfolio of technical resources, TUVALLI provides all the expertise and services necessary to help our clients complete their road projects and programmes on time, with quality and within schedule.

Throughout the provision of these services, TUVALLI manages the sourcing of equipment, labour hire, supplies and also the project planning of all major road construction and drainage projects. Our process for major road constructions starts with understanding the needs of the project and ends with delivering the project safely and within the scheduled time, budget and quality parameters.



DRAINAGE CONSTRUCTION

TUVALI is a specialized firm that is responsible for designing, building, and maintaining drainage systems. These systems are essential for managing stormwater, preventing flooding, and protecting the environment. It offer a range of services related to drainage infrastructure, which may include:

Drainage System Design: We create drainage plans based on the specific needs of the project, taking into account factors such as topography, climate, and local regulations.

Drainage Installation: This involves the actual construction of drainage systems, including the installation of pipes, culverts, catch basins, and other components.

Stormwater Management: Managing stormwater runoff is a critical part of drainage construction. We design systems that efficiently collect and channel stormwater away from roads, buildings, and other areas.

Erosion Control: Preventing erosion is essential for maintaining the stability of the land and preventing sediment from entering water bodies. As TUVALI we implement erosion control measures like silt fences and sediment basins.

Flood Control: TUVALI often work on projects aimed at reducing the risk of flooding by constructing flood control channels, levees, and detention basins.

Maintenance and Repairs: Drainage systems require regular maintenance and occasional repairs to ensure they function correctly. We may offer ongoing maintenance contracts.

Environmental Compliance: We ensure that drainage systems adhere to environmental regulations and standards, including those related to water quality and habitat preservation.



CONSTRUCTION OF CONCRETE TRAPEZOIDAL DRAINAGE

Grading and Landscaping: Proper grading of land and landscaping can help with drainage and stormwater management. So we offer these services in conjunction with drainage construction.

Pipe and Culvert Installation: This involves the installation of various types of pipes and culverts to facilitate the flow of water.

Drainage Surveys and Inspections: TUVALI may conduct surveys and inspections to assess the condition of existing drainage systems and recommend improvements.



CONSTRUCTION OF SOIL TRAPEZOIDAL DRAINAGE



SOLAR POWER CONSTRUCTION

Every task is completed in a safe and skilled manner, regardless of its size or complexity.

For anyone in need of solar power, TUVALLI strives to offer the best systems at a very reasonable investment with the goal of becoming the most well-known household brand for solar energy in Zambia. We have a great team of industry experts providing the best solutions to the customers with the aspiration of exceeding their expectations in the quality and the investment for owning a solar system.

Solar Installation

This sector includes construction of small to large solar infrastructure. These include:

Mini-grids and microgrids
Hybrid generation systems
Home backup power system

We can fulfil the complete spectrum of Solar infrastructure development projects, Residential solar back-up and off-grid systems, commercial off-grid and on grid solar systems. Water and effluent treatment plants Our team can construct the following facilities for both rural and urban set up: Solar feasibility studies, site assessment and energy analysis Mini-grid and Micro grid infrastructure (off-grid and on grid) Commercial and small scale solar energized fluid pumping solutions. Solar heating and cooling systems

Solar PV System

You Solar PV system is consisting of Solar Modules, Solar Inverter with a comprehensive Management Facility & Complete Mounting Structure (On-roof).

Mini-grid business models vary by ownership, size and customer and there are different strategies used to make them a success, including demand management, promotion of productive end use, quality of electricity service, tariff design, revenue collection and end user finance.

We are convinced that decentralized and intelligent energy management systems is the energy supply of the future. Long-term relationship with our customers is essential for our business model. Produce as much as possible locally Collaboration and contribution to the local universities and research institutes.



POWER LINE & SUBSTATION CONSTRUCTION

Continued support and maintenance ensures systems operate at peak optimum performance

Our 24/7 services team are capable of resolving multiple electrical tasks, they have built a solid reputation within the domestic market, with customer satisfaction, guaranteed.

TUVALI's suite of maintenance and installation services to the residential sector encompasses:

Installation of electrical power and lighting systems, smoke alarms, RCD's & switchboards 24/7
Emergency breakdown service Property Management – electrical maintenance and new installations
Electrical asset maintenance Design of electrical systems Underground electrical supply Electrical compliance, testing and certification.

TUVALI is involved in the majority of the electrical components of residential construction as well as commercial and industrial installations. We will always do the task to your satisfaction. We are able to offer a wide range of electrical services as a result of our expansion and success. For TUVALI, no task is too minor. We work hard to complete all of our tasks quickly and safely.

Commercial and Residential Wiring

In residential or household settings, we manage electrical installation, lighting wiring, electric appliance installation, or performing repairs. On the other hand, commercial handle electrical duties in large or small industrial settings.

From 11Kv to 66kV, our Powerlines and Substations operations handles it all.

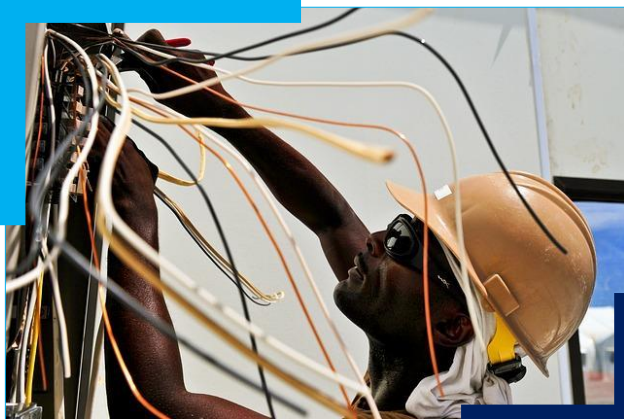
The construction of power lines and substations for various Municipalities and town councils, ZESCO and private developers is a well-established division in Zambia . With teams of skilled project managers and crews, even the most difficult terrain is no match for TUVALI.

TUVALI Engineering Limited has the capacity and expertise to build substations ranging from 11 kV to 66 kV (high voltage).

We have worked on amongst others:

- Woodlands Substation: new 33/11kV substation
- Chalala Bay: 33-11kV Substation
- Kitwe Substation Refurbishment: 2 bay 33/22kV outdoor substation
- Mpika : 6km, 11kV line





STEEL STRUCTURES

BUILDING



TUVALI is a reputable and dynamic player in the steel construction industry. With a legacy of excellence, we have continually evolved and innovated to meet the growing demands of the construction sector. Our commitment to quality, safety, and precision has made us a trusted partner in structural and architectural steelwork.

Core Services:

Structural Steel Fabrication: We specialize in the fabrication of structural steel components used in a wide range of construction projects, from skyscrapers to industrial complexes.

Steel Erection: Our expert teams ensure that the steel structures we fabricate are expertly erected on-site, adhering to the highest safety standards.

Architectural Steelwork: We create custom architectural steel elements that enhance the aesthetic and functional aspects of buildings, including staircases, handrails, and ornamental features.

Custom Steel Fabrication: Our experienced craftsmen can fabricate bespoke steel components to meet the unique needs of your project.

Welding and Metalwork: We provide welding and metalworking services, utilizing the latest techniques and technologies to deliver exceptional results.

Expertise and Experience:

With years of experience, our team has successfully completed a wide range of projects. Our expertise in structural design and engineering is backed by certifications, ensuring that every project is executed with precision and professionalism.

Design and Engineering:

Our in-house design and engineering team utilizes the latest software and 3D modeling tools to develop innovative and customized steel structures that meet the specific needs of our clients. This enables us to optimize efficiency and functionality, reducing project costs and timelines.

Quality Assurance:

We are committed to delivering exceptional quality, adhering to stringent quality control processes that include inspections, adherence to industry standards, and third-party certifications. Your project's success is our highest priority.

Safety Measures:

Safety is a core value at TUVALI. We maintain rigorous safety protocols to protect our workers and clients during every construction project. Our commitment to safety is reflected in our industry recognition and certifications.



PROJECT

DESIGN, MANAGEMENT AND CONSULTATION

TUVALI is a leading provider of comprehensive project design, management, and consultation services. With a proven track record of successfully delivering projects across various industries, we are committed to helping our clients achieve their goals efficiently, on time, and within budget. Our dedicated team of experts specializes in every phase of project development, from initial concept and design through to execution and post-project evaluation.

Project Design:

Our experienced team collaborates with clients to define project objectives and goals.

We create detailed project plans, scope documents, and conceptual designs.

Utilizing the latest technology and industry best practices, we develop innovative and effective project designs.

Project Management:

Our certified project managers are adept at overseeing project execution.

We provide end-to-end project management services, ensuring timelines, budgets, and quality standards are met.

Comprehensive risk assessment and mitigation strategies are employed to tackle unforeseen challenges.

Consultation:

Our consultancy services encompass feasibility studies, market research, and strategic planning.

We offer guidance on regulatory compliance, permitting, and environmental considerations.

Our consultants provide expert advice on optimizing project performance and sustainability.

Key Features:

Industry Expertise:

Custom Solutions:

Cutting-Edge Technology:

Proven Success:

Client-Centric:

Approach:

Sustainability Focus:

Compliance and Quality Assurance:

"Let our advance worrying become
advance thinking and planning."
~ Winston Churchill.

PROCUREMENT & SUPPLY MANAGEMENT

TUVALI has gained experience in a variety of economic sectors, which enables us to manage supply whenever there is a need. We engage with many facets of society, including mining, public institutions, NGO's, the commercial sector, and the general public.



MINES



PUBLIC INSTITUTIONS



NGO'S



COMMERCIAL SECTOR

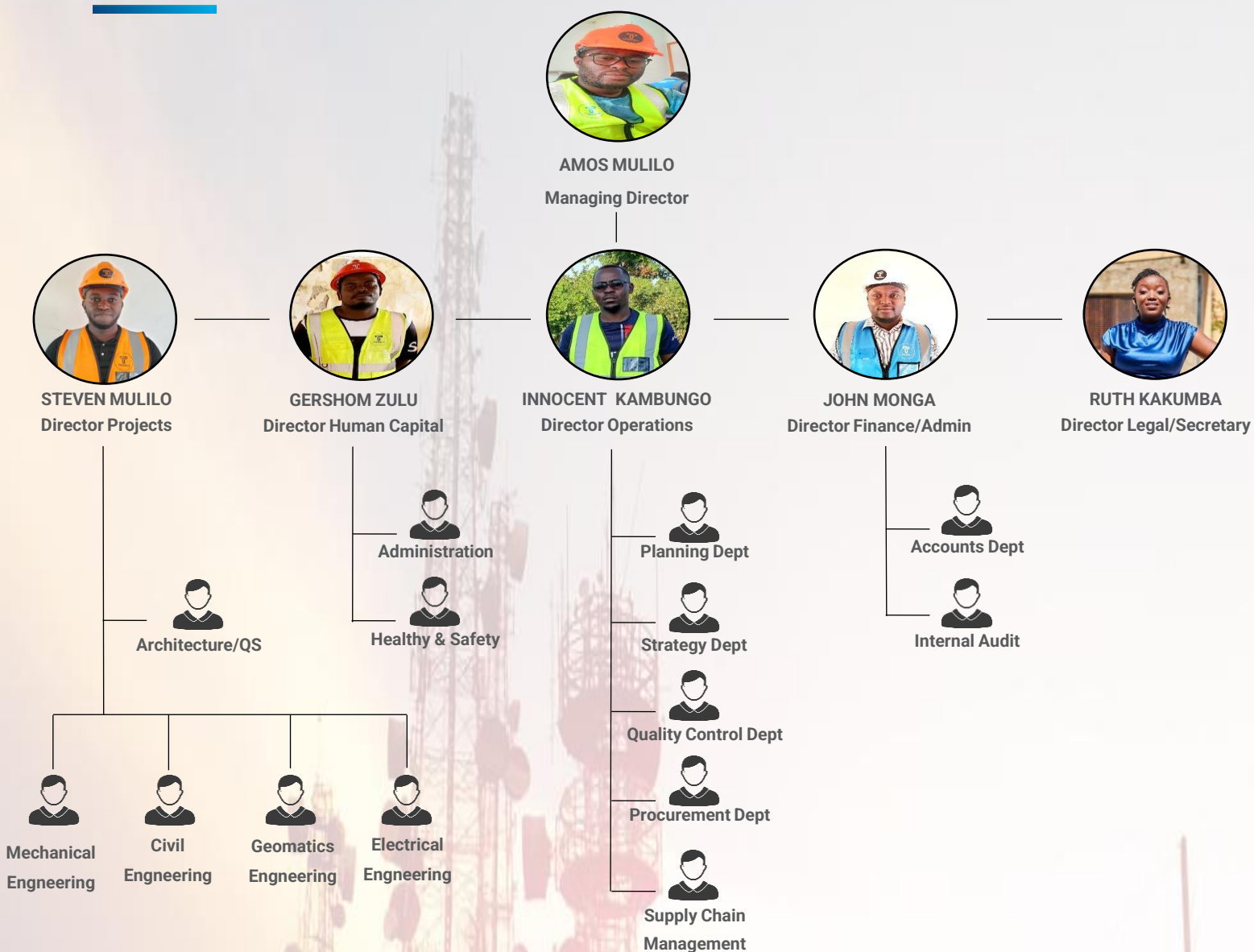


PUBLIC SECTOR

We work closely with many manufacturers all around the world as their partners and authorized distributors. This makes our supply chain more reliable, consistent, and high-quality. IT firms, building materials, electrical components, and other manufacturers are on our list.

OUR TEAM

Company Structure



MANAGEMENT TEAM

The company's directors are its driving force; they have amassed a wealth of expertise and experience in the construction sector. They focus on the business development, purchasing, project management, operations, and management of the company.

The management team meets on a regular basis to discuss work processes, get feedback, identify changes in the business environment, evaluate work procedures, and communicate corporate policy and important takeaways to all employees.

COMPANY Certificates

CF45
(Regulation 46)
Companies Registration No. 120220041202
Serial No. 1245403



Republic Of Zambia
The Companies Act, 2017
(Act No. 10 of 2017)

The Companies (Prescribed Forms) Regulations, 2018
(Section 14)

CERTIFICATE OF INCORPORATION PRIVATE COMPANY LIMITED BY SHARES

This is to certify that **TUVALI ENGINEERING LIMITED** is on and from the 31st day of October 2022 incorporated as a PRIVATE COMPANY LIMITED BY SHARES.

Given under my hand and seal at Lusaka, Zambia, this 31st day of October 2022.



SUNDUZWAYO ZIMBA
Deputy Registrar of Companies

For further details relating to this business visit
<http://www.pacra.org.zm>

PACRA - CERTIFICATE OF INCORPORATION

CF47
(Regulation 48)
Companies Registration No. 120220041202
Serial No. 1245403



Republic Of Zambia
The Companies Act, 2017
(Act No. 10 of 2017)

The Companies (Prescribed Forms) Regulations, 2018
(Section 14)

CERTIFICATE OF SHARE CAPITAL

This is to certify that **TUVALI ENGINEERING LIMITED** has the nominal capital of

K15,000.00 divided into:

Number	Class	Value
15,000.00	Ordinary	1.00

Given under my hand and seal at Lusaka, Zambia, this 31st day of October 2022.



SUNDUZWAYO ZIMBA
Deputy Registrar of Companies

For further details relating to this business visit
<http://www.pacra.org.zm>

PACRA - CERTIFICATE OF SHARE CAPITAL



General Tax Clearance Certificate

TPIN: 2000832097

Jurisdiction: ISMTO_Lusaka

Taxpayer Name: TUVALI ENGINEERING LIMITED
Physical Address: PLOT SUB A1 LOT 13090 LILAYI ESTATE
Lusaka



Province: LUSAKA PROVINCE
Email: INFO@TUVALIZM.COM
Contact Number: 0975767963

Date: 03/01/2025
Certificate Number: 2543448962

Dear Sir/Madam

RE: TAX CLEARANCE CERTIFICATE FOR TUVALI ENGINEERING LIMITED - SECTION 81B (CAP 323)

This is to certify that **TUVALI ENGINEERING LIMITED** trading as **TUVALI ENGINEERING LIMITED** with TPIN 2000832097 is duly registered for tax purposes.

In addition, this tax clearance certificate has been issued to **TUVALI ENGINEERING LIMITED** trading as **TUVALI ENGINEERING LIMITED** pursuant to section 81 B of the Income Tax Act (CAP 323).

This certificate is valid up to 31/12/2025.

Accordingly, in terms of section 81 B of the Income Tax Act, for the duration of this certificate, the above named is free to conduct business in line with the trading license held.

Please note that any established act of non-compliance with the provisions of the Income Tax Act shall invalidate this Certificate.

You are advised to always scan the QR code to verify the validity of this Tax Clearance Certificate especially when submitted on a date different from the print date.

Yours Faithfully,

JOSEPH NONDE

Zambia Revenue Authority

NOTE: This notice has been issued for and on behalf of the Commissioner General

Zambia Revenue Authority Domestic Taxes Division
Enquiries Email: advice@zra.org.zm Website: www.zra.org.zm
ZRA National Call Center: 4111

ZRA - GENERAL TAX CLEARANCE CERTIFICATE



**ZAMBIA
REVENUE
AUTHORITY** | My Tax
Your Tax
Our Destiny

TAXPAYER IDENTIFICATION NUMBER REGISTRATION

This is to certify that the Taxpayer whose details are shown below has been registered with Zambia Revenue Authority.



TAXPAYER INFORMATION

Identity No / NRC	: 120220041202
TPIN	: 2000832097
Taxpayer Name	: TUVALI ENGINEERING LIMITED
Trading As	: TUVALI ENGINEERING LIMITED
Physical Address	: plot sub a1 plot13090 / LILAYI ESTATE Lusaka Lusaka Province
Postal Address	: ZRA_INITIATED
TPIN Jurisdiction	: ISMTO Lusaka Province

SECTION B: REGISTRATION DETAILS

Type of Registration	Effective Date of Registration
TAXPAYER IDENTIFICATION NUMBER	01/11/2022

This certificate shall remain in force until it is cancelled by ZRA.

JOSEPH NONDE
Commissioner - Direct Taxes

Issue date : 01/11/2022

ZRA - TPIN REGISTRATION

COMPANY Certificates



VALUE ADDED TAX CERTIFICATE



This is to certify that the Taxpayer whose details are shown below has been registered with Zambia Revenue Authority for Value Added Tax purposes.

Section A - Taxpayer

Taxpayer Identification	2000832087
Taxpayer's Name	TUVALI ENGINEERING LIMITED
Taxpayer's Trading Name	TUVALI ENGINEERING LIMITED
Taxpayer's Physical Address	PLOT SUB A1 PLOT13090 / LILAYI ESTATE Lusaka Lusaka Province

Section B VAT Registration

Value Added Tax Account Name	Value Added Tax --> TUVALI ENGINEERING LIMITED -->
Effective Date Of Registration	12, April 2023

This certificate is issued under authority of Value Added Tax Act, 1995 on behalf of commissioner-General. This certificate will remain in force until cancelled.

MOSES SHUKO

Commissioner - Indirect Taxes

Issue Date: 12/04/2023

ZRA - VAT CERTIFICATES



April 15, 2024

To Whom It May Concern

RE: ENDORSEMENT FOR PREFERENTIAL PROCUREMENT

This is to confirm that **TUVALI ENGINEERING LIMITED** has been duly registered, in accordance with the Citizens Economic Empowerment Act No. 9 of 2006 for purposes of satisfying the requirements of Statutory Instrument No. 36 of 2011 (Preferential Procurement Regulations), in the following category: **CITIZEN OWNED COMPANY**.

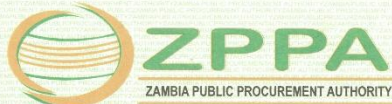
The validity period of this categorization is from this **15th Day of April 2024 to 14th April 2025**.

Charles Muwa Mungule, PhD
Director General
CITIZENS ECONOMIC EMPOWERMENT COMMISSION

Empowerment House, Plot 8467, Los Angeles Road/Los Angeles Estate, Lusaka. Tel: 0211 254214 / 257208 / 256020
Email: 0211 254214 Email: info@cec.org.zm Website: www.cec.org.zm

CS CamScanner

CEEC – PREFERENTIAL PROCUREMENT LETTER



Welcome to the e-Tendering Platform
This is your registration information as at 28/04/2024:

Supplier details	
Organisation name	TUVALI Engineering Limited
Company Registration Number	120220041202
Tax Payer's Identification Number	2000832097
ZPPA Registration Number	66145
Company type	Local Company
Address	PLOT NUMBER 951, SAMORA 2, ZAMBIA.
Postal code	10101
City	NYIMBA
Country	Zambia
Phone Number	0975767963
Shareholders	2
CEEC category	Citizen Owned
Valid Until	28/04/2026

You have registered in accordance with the Tender Regulations (Public Procurement Act No 12 of 2008) of the laws of Zambia to supply Goods and Services to Public Institutions in the following categories:

Areas of Interest

30000000-Structures and Building and Construction and Manufacturing Components and Supplies
71123004-Well management / construction services
71161413-Well fabrication or construction services
72102201-Electric power systems installation or service
72102205-Telecom equipment maintenance or support
72131501-Apartment construction
72131601-Power plant construction
72131701-Highway or road paving or surfacing
72131702-Bridge construction
80111618-Temporary construction services
81101513-Building construction management
81102401-High voltage overhead line construction
39121700-Electrical hardware and supplies
72131700-Infrastructure construction
81112200-Software maintenance and support
72000000-Building and Construction and Maintenance Services

ZPPA

**NATIONAL COUNCIL FOR CONSTRUCTION
CERTIFICATE OF CONTRACTOR REGISTRATION**

This is to certify that

TUVALI ENGINEERING LIMITED

has in terms of the NCC Act No. 10 of 2020 been registered in

**GRADE 4
CATEGORY B**

**General Building and Housing
(Zambian-Citizen Owned)**

FOR THE PERIOD JANUARY 2025 TO DECEMBER 2025 WHICH ENTITLES THEM TO ENTER INTO CONSTRUCTION WORKS CONTRACTS IN ACCORDANCE WITH THIS GRADE AND CATEGORY

Executive Director
Registration No: ZC0894/B

Director-Registration & Regulation
Serial No: Z4VRNCC-4/10599

8030 /257

Certificate valid only up to 31 December 2025

NCC – GRADE 4 CATEGORY B

COMPANY Certificates



NCC – GRADE 5 CATEGORY R



NCC – GRADE 6 CATEGORY C



NCC – GRADE 6 CATEGORY E



NAPSA – COMPLIANCE CERTIFICATE

COMPANY Certificates

 EngRB No. **316957754011726**

THE ENGINEERING REGISTRATION BOARD
(SECTION 12, EIZ ACT No. 17 of 2010)

REGISTRATION CERTIFICATE

This is to certify that
TUVALI ENGINEERING LIMITED
Having met approved requirements, has been registered as a
Registered Engineering Organisation
(R. Eng. O)
and is hereby authorised to use the above title

Chairperson
Registrar
21st May 2024
Date

Established for the Promotion and Regulation
of Engineering Practice in Zambia

 Serial No. **6786**

NOT VALID WITHOUT CURRENT PRACTISING CERTIFICATE

EngRB

 **THE ENGINEERING REGISTRATION BOARD** 

PRACTISING CERTIFICATE
2025

This is to certify that
TUVALI ENGINEERING LIMITED
has been authorised to practice
Engineering in Zambia in
Civil Engineering

Date: **27th January 2025**
EngRB No.: **316957754011726** Class: **C3**
Receipt No.: **REC5398**

  
Registrar

 021996

EIZ

 **WORKERS' COMPENSATION FUND CONTROL BOARD**

EMPLOYER COMPLIANCE CERTIFICATE

THIS IS TO CERTIFY THAT
TUVALI ENGINEERING LIMITED
EMPLOYER ACCOUNT NUMBER **0004600482/1901**
IS REGISTERED WITH THE WORKERS' COMPENSATION FUND CONTROL BOARD AND IS COMPLIANT
WITH THE PROVISIONS OF THE WORKERS' COMPENSATION ACT NO.10 OF 1999 OF THE LAWS OF ZAMBIA

AUTHORISED SIGNATORY
CERTIFICATE NUMBER
DATE ISSUED
VALID UP TO

ECN_0000100958
03/01/2025
31/12/2025



WORKERS' HAVE A RIGHT TO COMPENSATION

WCFCB – EMPLOYER COMPLIANCE CERTIFICATE



Lusaka Office

Plot No. 6
Lufubu Street, Kalundu
Lusaka
Lusaka, Zambia

Ndola Office

Plot No. F/2575/D5
Chifubu
Ndola
Copperbelt, Zambia

Kitwe Office

Plot No. 74
D Road, Natwange East
Kitwe
Copperbelt, Zambia

Nyimba Office

Plot No. 951
Samora 2
Nyimba
Eastern, Zambia

CONTACT DETAILS



+260 975 767 963
+260 772 730 357



www.tuvalizm.com
info@tuvalizm.com
tuvali.zm@gmail.com

TUVALI

Engineering Ltd



GET IN TOUCH



+260 975 767 963
+260 772 730 357



www.tuvalizm.com
info@tuvalizm.com



Plot No. 6, Lufubu, Kalundu,
Lusaka, Zambia

COMPANY PROFILE